

EN

DENVER[®]

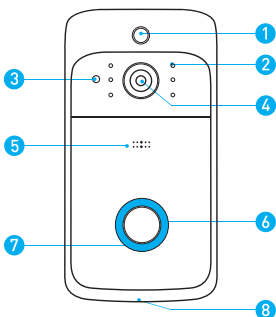
Video Doorbell VDB-110

User Manual



facebook.com/denverelectronics

1. Main Unit



1. PIR Motion Sensor

2. Infrared LED x 6

3. Light Sensor

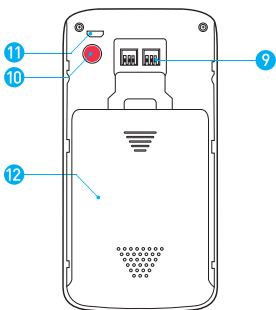
4. 166°HD Camera

5. Microphone

6. Doorbell Button

7. LED Indicator

8. Speaker



9. AC 8V-24V Power Interface

10. Reset Button

11. Micro USB Port (Battery Charging)

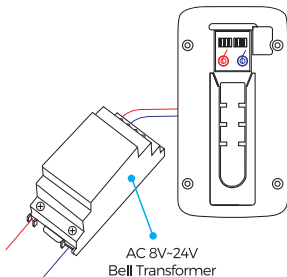
12. Battery door

2.Power Supply

The doorbell can be operated by either external AC power, or battery.

Operation on external AC power

Connect the external wires to the screws on the back of your doorbell. Make sure the red wire can only connect to the left screw and the other wire can only connect to the right screw.



battery power

Charging Time: 14 hours using 1A USB charger (not included) (via the doorbell micro USB port)

Please fully charge the 18650 batteries before use. With normal use, batteries will last between 6 to 8 months or approximately 1,500 notification events.

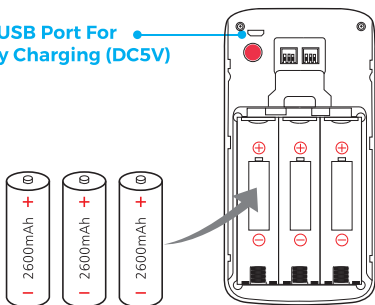
Note:

If the doorbell captures an excessive number of events every day, this consumes battery power a lot, and you need to recharge the batteries earlier than normal. Plus, the batteries are also drained each time you use the Live View to check or speak through your doorbell. To prevent excessive events, you can adjust your motion settings to a lower sensitivity.

WARNING

Be sure to put 18650 batteries in the correct direction.
Inserting batteries incorrectly causes damage.

Micro USB Port For
Battery Charging (DC5V)



Rechargeable 18650 Battery



Battery door

3. Set up your video doorbell in the ToSee APP

Step 1

Download the ToSee app. The ToSee app will walk you through setting up and remotely controlling your Doorbell. Search for "ToSee" on the Apple app store or Google Play.



ToSee



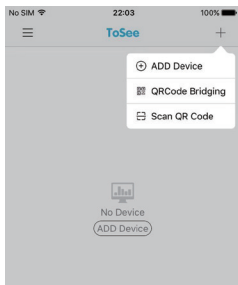
iOS



Android

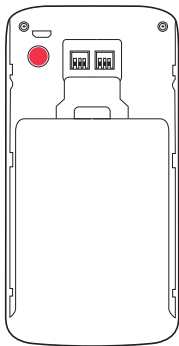
Step 2

Open the ToSee app on your cellphone. Tap "+" then tap "QRCode Bridging". (Or tap "ADD Device" and follow the in-app instructions to set up your camera.)



Step 3

Open the battery cover and pull out the insulation tabs.



Step 4

Tap "The Red Light is Flashing".



Turn on the device, check if the Red LED Light is Flashing



The Red Light is Flashing

ⓘ If the Red LED light does not flash, press and hold the reset button for 5 seconds until the Red LED Light Flashes.

Step 5

Find the name of your WiFi network and tap on it. Enter your WiFi password, then tap "Next".



This feature is only supported in new software versions. Please confirm the network prompt tone and then use the QR code distribution function.

Wi-Fi: XXXX [Replace network](#)

Only 2.4G Wi-Fi network is supported

Eken*6234 [👁](#)

ⓘ Input any eight digit password if there is no set password.

Next

Step 6

Scan the QR code with your doorbell camera, and keep your phone at a distance of about 15-20cm (6-8 inches). You'll hear "Joined the network successfully" and then tap "Next".



Please use the device to scan the QR code



Next

Please click the button after the device starts to flash blue



Please use the device to scan the QR code

100%

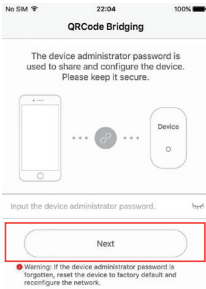
In the distribution network, please be patient

Next

Please click the button after the device starts to flash blue

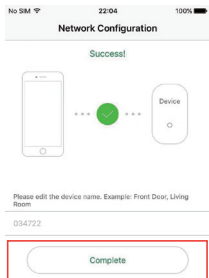
Step 7

Enter your device administrator password, then tap "Next".



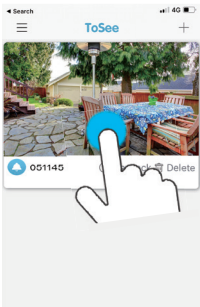
Step 8

Enter your device name and tap "Complete".



Step 9

Tap the doorbell Live View. If you can see the Live View, the setup is completed and successful.



NOTICE:

Be sure to turn on push notifications on your phone.

1. Navigate to Settings -> Notifications -> ON
2. A list of apps that support push notifications will appear.
3. Tap the ToSee and enable the notification.

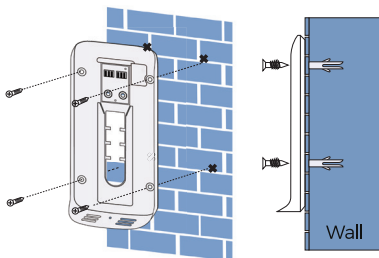
4. App Live View Interface

1. Back
2. Share
3. Settings
4. Battery
5. Volume
6. Playback

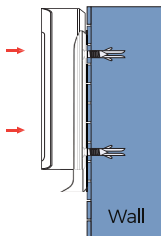
7. Video effects
8. Full screen
9. Screenshot
10. Talk to visitors
11. Record

5. Install Your Video Doorbell On The Wall

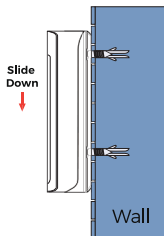
Mark 4 drill holes and drill holes on your wall, then insert the anchors. Secure your doorbell on the wall with 4 mounting screws and 1 safety screw.



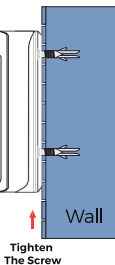
Step 1



Step 2



Step 3



6. Troubleshooting

Q : How do I reset the doorbell?

A : Press and hold the RESET Button for 6 seconds.

Q : How do I share the video doorbell with my family?

A : 1. Open the ToSee App.

- From the home page, tap the doorbell Live View.
- Tap the "Share icon" in the top right corner.
- Enter the device administrator password, then tap "Confirm".
- Tap "+".
- Enter the new user's nickname, then tap "Confirm". You will see a QR code.

2. Open the ToSee App on the new user's cellphone.

- From the home page, tap "+" in the top right corner.
- Tap "Scan QR code", then scan the QR code generated above.
- You will see "Success", then tap "Confirm".
- Enter a Device Name. Tap "Confirm" and doorbell sharing is completed.

Q : How do I adjust PIR motion detection sensitivity?

A : 1. From the device list page, tap the "Live view."

2. Tap "Settings" in the top right corner.

3. Tap "Motion Detection Sensitivity."

Option for PIR Motion Detection Sensitivity

- PIR Motion Sensor Disabled
- 10-second delay trigger on PIR motion detection
- 5-second delay trigger on PIR motion detection
- No Delay on PIR motion detection

Q : How many users can view the video at the same time?

A : Up to 4 users may view the video feed, but only 1 user can use the direct intercom. Both iOS and Android are compatible.

Q : Is 5GHz WiFi supported?

A : No. Only 2.4GHz WiFi is supported.

Q : My signal is poor on my doorbell.

A : Your doorbell maybe too far away from your wireless router or you may have some obstructions in between that reduce signal strength. You might try repositioning your router or getting a signal extender/repeater for your wireless router.

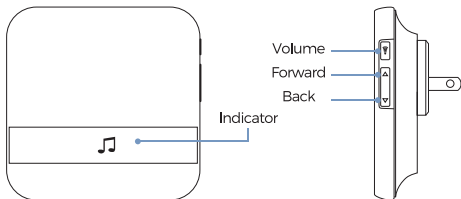
Wireless Chime (Optional)

Connect the video doorbell to the doorbell chime, and get instant alert in your home when someone rings the doorbell. Hear the doorbell chime when you are home, without checking your video doorbell app! The chime plugs into any wall outlet, you can place it anywhere in the home.

NOTICE:

The video doorbell is only compatible with our wireless chime, and not compatible with any other traditional doorbell chimes. The wireless chime is optional. If the wireless chime is not installed, doorbell notifications will go directly to the ToSee app.

1. Overview of the wireless chime

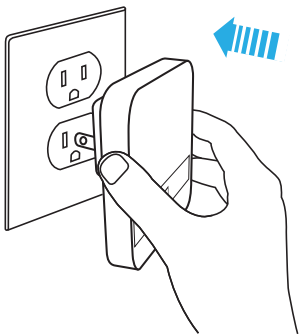
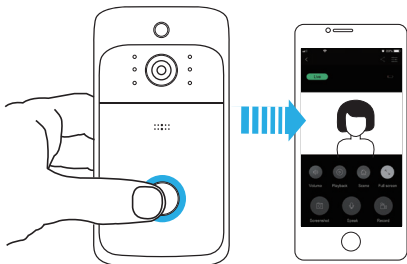


2. Getting Started

Set up your chime with the video doorbell

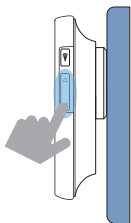
Step 1

Before setup of the wireless chime, make sure your video doorbell is connected to your phone and your chime is plugged in the wall outlet.



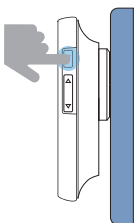
Step 2

Press the forward or back button to cycle through 52 different tunes and select a tune.



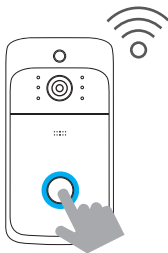
Step 3

Press and hold the volume button for 5 seconds until the blue indicator is turned on.



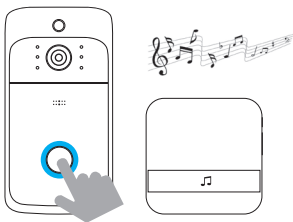
Step 4

Press the doorbell button.



Step 5

Press the doorbell button again, and the chime automatically plays the tune you selected.



DENVER®

www.denver-electronics.com



Electric and electronic equipment and included batteries contains materials, components and substances that can be hazardous to your health and the environment, if the waste material (discarded electric and electronic equipment and batteries) is not handled correctly.

Electric and electronic equipment and batteries is marked with the crossed out trash can symbol, seen below. This symbol signifies that electric and electronic equipment and batteries should not be disposed of with other household waste, but should be disposed of separately.

As the end user it is important that you submit your used batteries to the appropriate and designated facility. In this manner you make sure that the batteries are recycled in accordance with legislature and will not harm the environment.

All cities have established collection points, where electric and electronic equipment and batteries can either be submitted free of charge at recycling stations and other collection sites, or be collected from the households. Additional information is available at the technical department of your city.

Hereby, Inter Sales A/S declares that the radio equipment type VDB-110 is in compliance with Directive 2014/53/EU. The full text of the EU declaration of conformity is available at the following internet address:

Please enter: www.denver-electronics.com and then click the search ICON on topline of website. Write modelnumber: vdb-110. Now enter product page, and red directive is found under downloads/other downloads

Operating Frequency Range: 2400-2500MHz

Max Output Power: 10dbm

DENVER ELECTRONICS A/S

Omega 5A, Soeften

DK-8382 Hinnerup

Denmark

www.facebook.com/denverelectronics



facebook.com/denverelectronics

Denver Electronics A/S
Omega 5A
DK-8382 Hinnerup
Denmark



ALL RIGHTS RESERVED
COPYRIGHT DENVER ELECTRONICS A/S
www.denver-electronics.com